



**FACE BRICK**



**ENDICOTT™**



**BEAUTIFUL MOVEMENT  
BEGINS WITH A BRICK**

Beauty starts with a single brick.

Formed from iron-rich clays,

Endicott face brick are like no other.

The extraordinary colors, beautiful sheen,

compelling textures and varied sizes

add richness to every space. Capture

design intent with the consistency

and sophistication of Endicott.







**Yale University Health Center**

Color: Manganese Ironspot

Texture: Smooth

Size: Solid Modular, Bullet Shape

Location: New Haven, CT







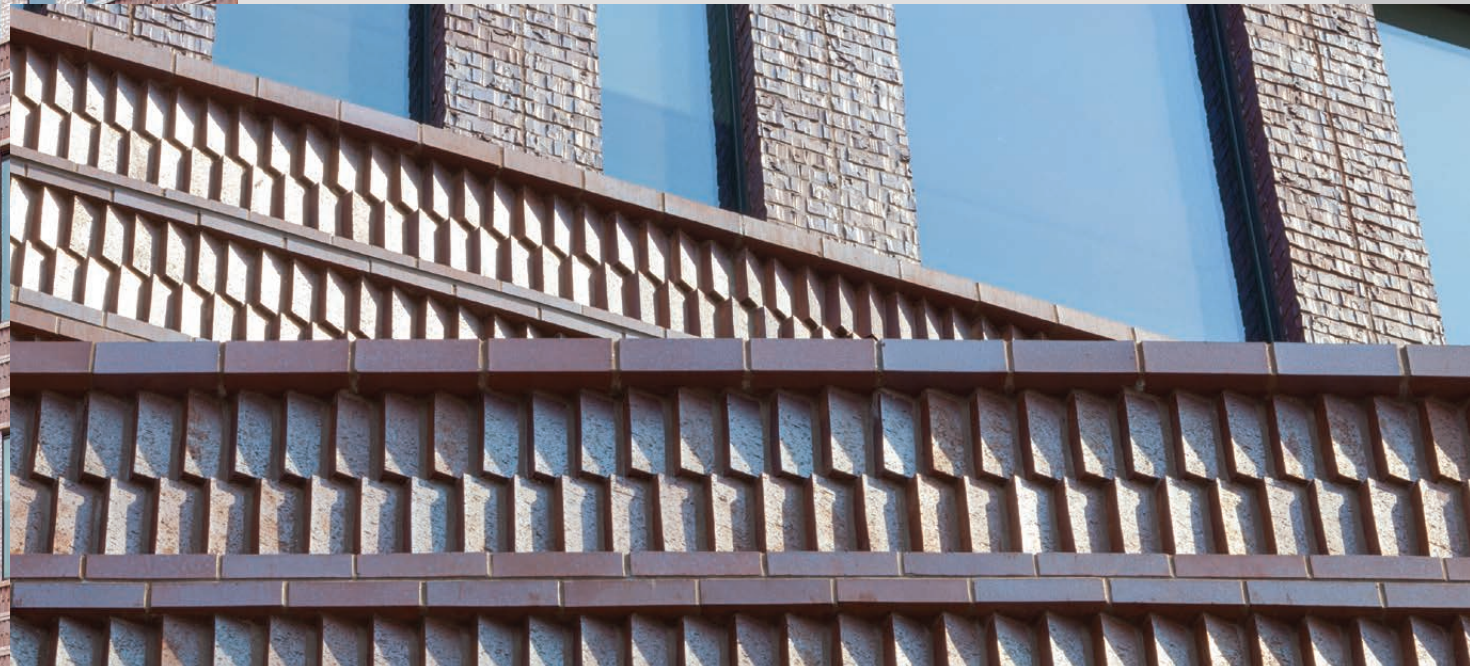
**Bruce C. Bolling Municipal Building**

Color: Medium Ironspot #46

Texture: Smooth, Velour, Artisan

Size: Modular, Shapes

Location: Boston, MA







**ZMBRT House**

Color: Dark Ironspot

Texture: Smooth

Size: Solid Norman

Location: Covington, KY







**Fort Meyers Regional Library**  
Color: Coppertone, Desert Ironspot Light  
Texture: Smooth  
Size: Solid Utility, Norman, Modular, Shapes  
Location: Fort Meyers, FL







**Huntsman Hall—Wharton School of Business**

Color: Red Blend  
Texture: Smooth  
Size: Norman  
Location: Philadelphia, PA





ARCHITECTURAL SERIES

Adding richness to great design since 1920.



Golden Buff



Red Blend



Burgundy Blend



Bordeaux Blend



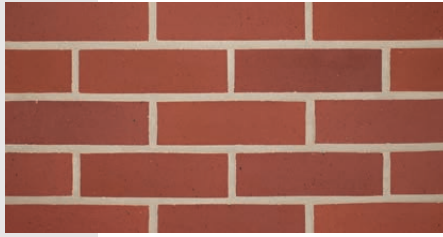
Manganese Brown



Light Grey Blend



Grey Blend



Ruby Red



Red Ironspot



Executive Ironspot



Sienna Ironspot



Light Sandstone



Dark Sandstone



Desert Ironspot Light



Desert Ironspot Dark



Medium Ironspot #77



Medium Ironspot #46



Buff Blend



Rose Blend



Coppertone



Copper Canyon



Dark Ironspot



Manganese Ironspot



RESIDENTIAL SERIES



Buckskin Sands



Adobe Sands



Desert Sands



Orleans Sands



Grey Sands



Antique 752



Red Heritage with Black



Burgundy Sands



Tuscan Grey



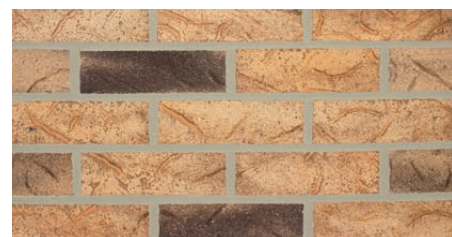
Grey Heritage with Black



Autumn Sands



Merlot Sands



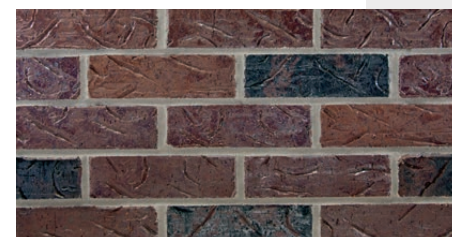
Copper Sands



Sahara Sands



Heritage #46



Heritage #46 No Yellow

JEFFERSON SERIES



Rushmore



Continental



Monticello



Liberty



Patriot



## TEXTURES



Smooth



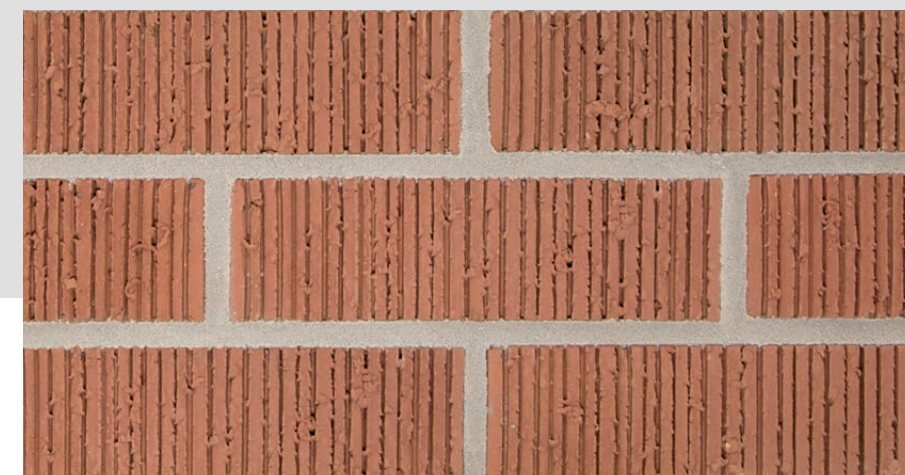
Velour



Matt



Velvetex



Vertical Score



Artisan



## TEXTURES CONTINUED



Danish Hand Mould

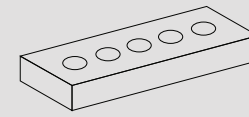


Heritage



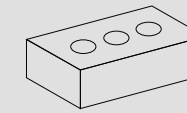
Antique

## SIZES



**Roman**

3-5/8" x 1-5/8" x 11-5/8"



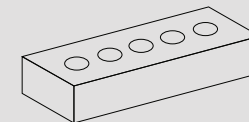
**Modular**

3-5/8" x 2-1/4" x 7-5/8"



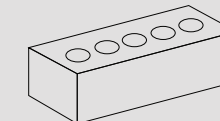
**Danish Hand Mould**

3-5/8" x 2-1/4" x 7-5/8"



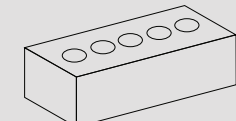
**Norman**

3-5/8" x 2-1/4" x 11-5/8"



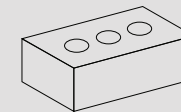
**Slim Kingsize**

2-5/8" x 2-5/8" x 9-5/8"



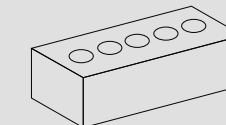
**Kingsize**

3" x 2-5/8" x 9-5/8"



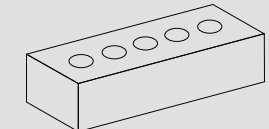
**Engineer Modular**

3-5/8" x 2-13/16" x 7-5/8"



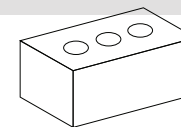
**Engineer Kingsize**

3" x 2-13/16" x 9-5/8"



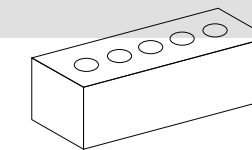
**Norwegian**

3-5/8" x 2-13/16" x 11-5/8"



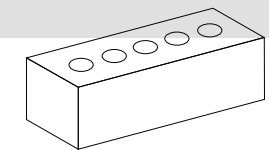
**Closure**

3-5/8" x 3-5/8" x 7-5/8"



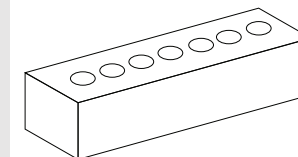
**3" Utility**

3" x 3-5/8" x 11-5/8"



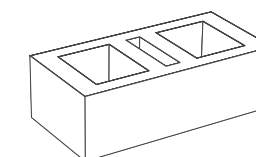
**Utility**

3-5/8" x 3-5/8" x 11-5/8"



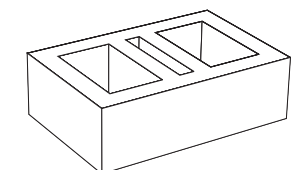
**Meridian**

3-5/8" x 3-5/8" x 15-5/8"



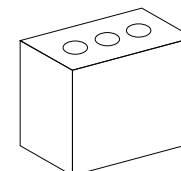
**6" Thru the Wall**

5-5/8" x 3-5/8" x 11-5/8"



**8" Thru the Wall**

7-5/8" x 3-5/8" x 11-5/8"



**Triple Brick**

3-5/8" x 7-5/8" x 7-5/8"





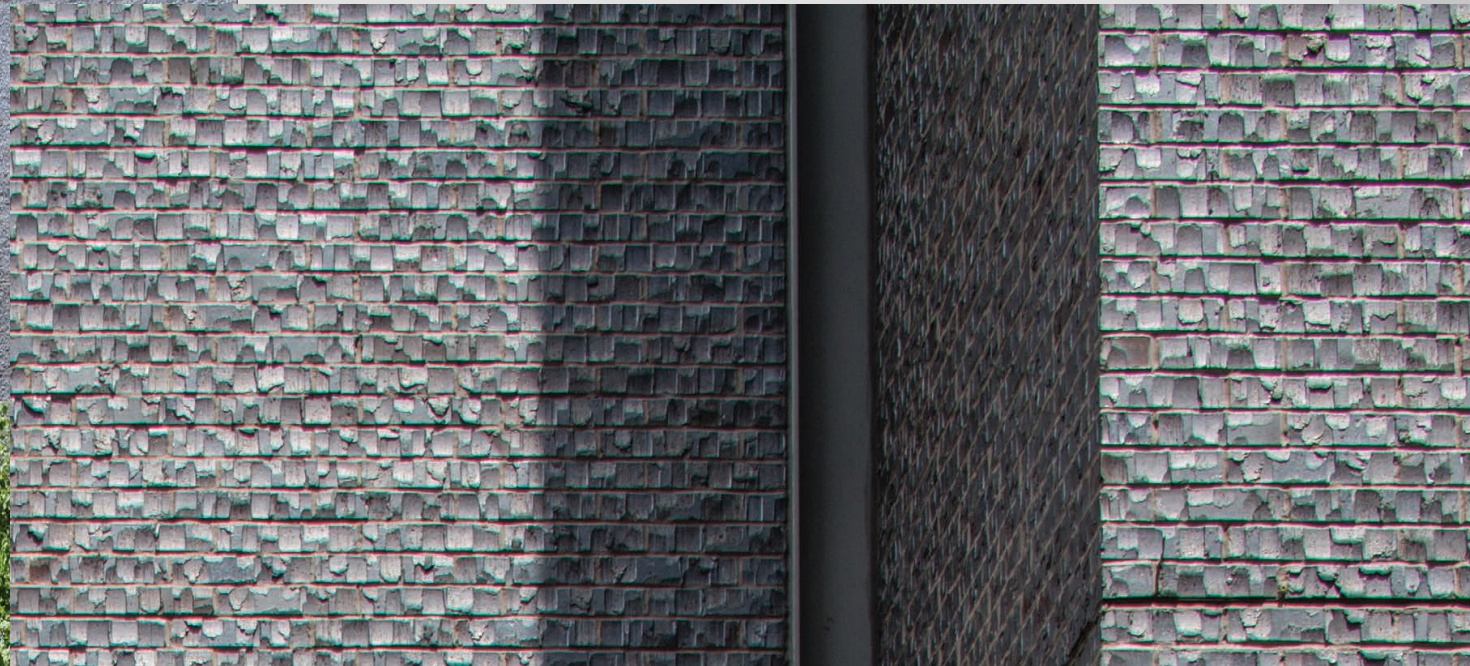
**Creekside Middle School**  
Color: Golden Buff, Medium Ironspot #46  
Texture: Velour  
Size: Closure, Shapes  
Location: Carmel, IN







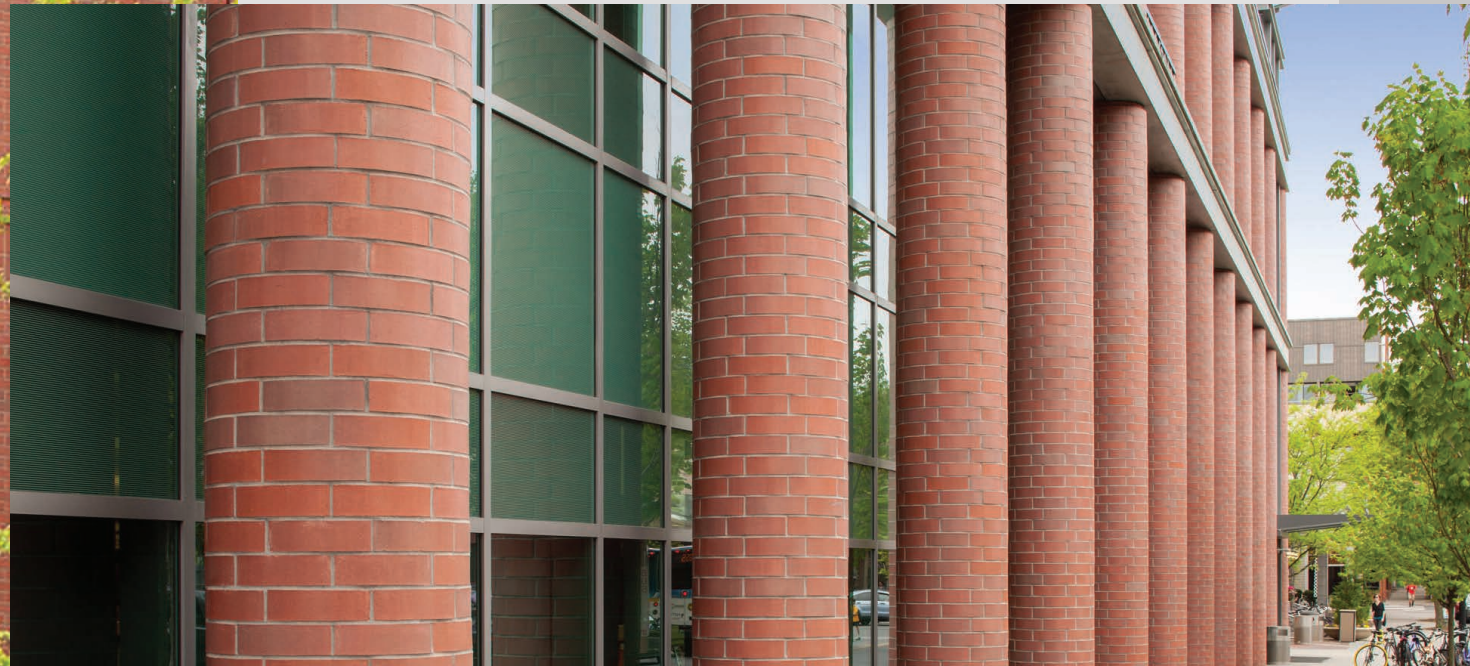
**Fordham Campbell, Salice & Conley Residence Halls**  
Color: Manganese Ironspot  
Texture: Artisan  
Size: Norman  
Location: Bronx, NY







**Princeton Public Library**  
Color: Burgundy Blend  
Texture: Smooth  
Size: Utility, Shapes  
Location: Princeton, NJ





In 1920, rich mineral deposits were discovered in Jefferson County, Nebraska. These rich minerals help give Endicott brick their unmatched color and sheen. Across North America, Endicott's collection of face brick, thin brick, pavers, tile and special shapes are setting the solid world in motion.

**For other literature, samples and the name of your nearest distributor, contact Endicott today.**



**Endicott Clay Products Company**  
P.O. Box 17  
Fairbury, Nebraska USA 68352  
402-729-3315 FAX: 402-729-5804  
[endicott.com](http://endicott.com)

**Kennesaw State University, Marietta**  
Color: Medium Ironspot #77  
Texture: Velour  
Size: Modular  
Location: Marietta, GA