

# CLAY PAVERS



## **NATURAL COLORFAST BEAUTY**

A step above hardscape alternatives, the natural colorfast beauty of Endicott clay pavers empowers you to build your design vision from the ground up.



WHERE FORM  
MEETS  
FUNCTION.

**ENDICOTT**

NOTHING EXEMPLIFIES THE IDEA OF “WHERE FORM MEETS FUNCTION” BETTER THAN CLAY PAVERS FROM ENDICOTT. AS DURABLE AS THEY ARE STUNNING, AS INSPIRING AS THEY ARE PRACTICAL, ENDICOTT CLAY PAVERS ARE FORMED FROM NATURAL, COLORFAST MATERIALS AND FIRED AT TEMPS EXCEEDING 2,000 DEGREES FAHRENHEIT TO RESIST WEAR, COLOR-FADING, AND STAINING.

Paver Colors: Medium Ironspot #46 and #77, Dark Ironspot, Bordeaux Blend, Rose Blend

*Outlets at San Clemente – San Clemente, CA*



# VILLANOVA UNIVERSITY



VILLANOVA  
PENNSYLVANIA



## PROJECT DETAILS

### COLOR

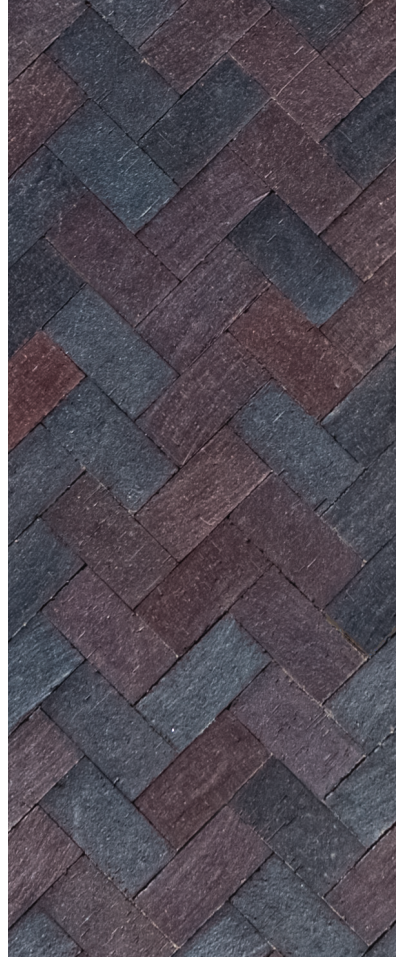
Dark Ironspot  
Medium Ironspot #46  
Manganese Ironspot

### SIZE/STYLE

2-5/8" x 4" x 8" Relieved Edge/Lugged  
2-5/8" x 4" x 8" Permeable



# DUBLIN STREETSCAPE



DUBLIN  
OHIO



## PROJECT DETAILS

### COLOR

Medium Ironspot #46  
Manganese Ironspot  
Dark Ironspot

### SIZE/STYLE

4" x 8" Relieved Edge/Lugged  
4" x 8" Square Edge  
4" x 8" Permeable



# OUTLETS AT SAN CLEMENTE



SAN CLEMENTE  
CALIFORNIA



## PROJECT DETAILS

### COLOR

Medium Ironspot #46  
Dark Ironspot  
Medium Ironspot #77  
Bordeaux Blend  
Rose Blend  
Red Blend  
Coppertone  
Copper Canyon  
Burgundy Blend

### SIZE/STYLE

4" x 8" Relieved Edge/Lugged



# COLORS

---



Rose Blend



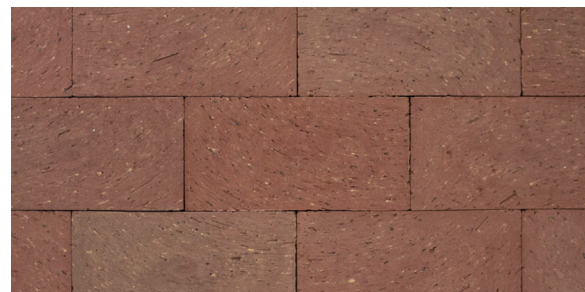
Red Blend



Medium Ironspot #77



Medium Ironspot #46



Burgundy Blend



Bordeaux Blend



Dark Ironspot



Manganese Ironspot



Coppertone

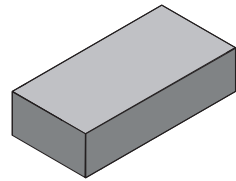


Copper Canyon



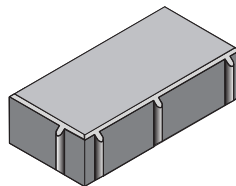
# SIZES

4 x 8 PAVER

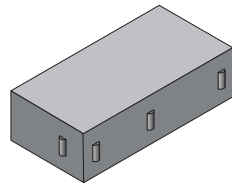


1-1/4" x 3-5/8" x 7-5/8"    2-1/4" x 3-5/8" x 7-5/8"

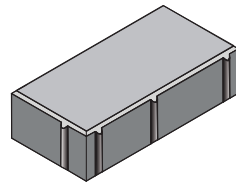
2-1/4 x 4 x 8  
PERMEABLE PAVER



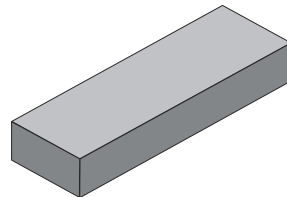
2-1/4 x 4 x 8  
INVISI-LUG™ PAVER



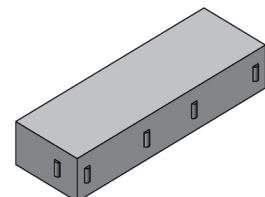
2-1/4 x 4 x 8  
RELIEVED EDGE/LUGGED PAVER



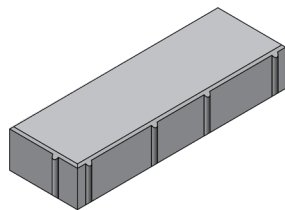
2-1/4 x 3-5/8 x 11-5/8  
PAVER



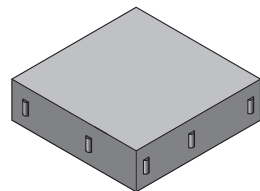
2-1/4 x 4 x 12  
INVISI-LUG™ PAVER



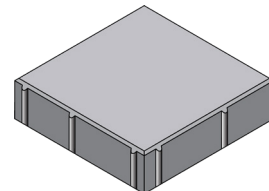
2-1/4 x 4 x 12  
RELIEVED EDGE/LUGGED PAVER



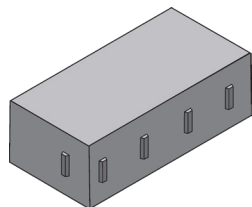
2-1/4 x 8 x 8  
INVISI-LUG™ PAVER



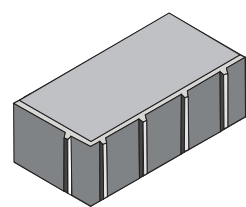
2-1/4 x 8 x 8  
RELIEVED EDGE/LUGGED PAVER



2-5/8 x 4 x 8  
INVISI-LUG™ PAVER

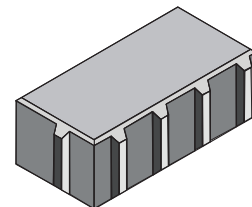


2-5/8 x 4 x 8  
RELIEVED EDGE/LUGGED PAVER



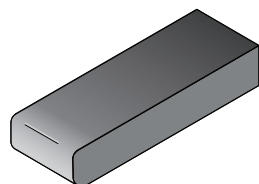
Effective: 2-5/8" x 4" x 8"  
Actual: 2-7/8" x 4" x 8"

2-5/8 x 4 x 8  
PERMEABLE PAVER



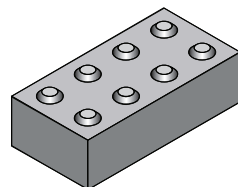
Effective: 2-5/8" x 4" x 8"  
Actual: 2-7/8" x 4" x 8"

PAVER STEP TREAD



2-1/4" x 3-5/8" x 7-5/8"  
2-1/4" x 3-5/8" x 11-5/8"

ADA HANDICAP DETECTABLE  
WARNING PAVER



2-1/4" x 3-5/8" x 7-5/8"  
2-1/4" x 4" x 8"

NOTE: INVISI-LUG™ Pavers are patent pending.

# INVISI-LUG™

## WHO SAYS YOU CAN'T HAVE IT ALL?



### THE NEW INVISI-LUG™ EXTRUDED CLAY PAVER GIVES YOU EVERYTHING YOU HAVE WANTED IN A PAVER:

- A recessed lug that guarantees proper joint spacing to eliminate chippage.
- Because its lugs are recessed it leaves a crisp, square edge.
- Eliminates the need for buying plastic spacers, saving substantial cost.
- Since proper joint spacing is automatic, the speed of installation is improved.
- Improved joint line appearance.
- Especially in vehicular applications, full and proper joint spacing on sand-set pavers promotes interlock.

### INVISI-LUG™ PAVER BENEFITS ARE IN ADDITION TO THE TRADITIONAL BENEFITS OF USING ENDICOTT CLAY PAVERS:

- Vibrant colors, including ironspots, that other materials cannot mimic.
- Colorfast.
- Durable.
- Incredibly high compressive strength.

WITH ENDICOTT'S INVISI-LUG™ PAVERS, YOU GET EVERYTHING YOU HAVE WANTED.



# CREIGHTON UNIVERSITY ROUNDBABOUT



OMAHA  
NEBRASKA



## PROJECT DETAILS

### COLOR

Burgundy Blend  
Red Blend  
Rose Blend  
Medium Ironspot #77

### SIZE/STYLE

2-5/8" x 4" x 8" Relieved Edge/Lugged



# CITADEL OUTLETS MALL



LOS ANGELES  
CALIFORNIA



## PROJECT DETAILS

### COLOR

Medium Ironspot #46  
Dark Ironspot  
Medium Ironspot #77  
Bordeaux Blend  
Coppertone  
Copper Canyon

### SIZE/STYLE

4" x 8" Relieved Edge/Lugged



# HARLEY STREETSCAPE



FORT WORTH  
TEXAS



## PROJECT DETAILS

### COLOR

Medium Ironspot #46  
Medium Ironspot #77  
Manganese Ironspot

### SIZE/STYLE

4" x 8" Relieved Edge/Lugged  
4" x 8" ADA





**Endicott Clay Products Company**

P.O. Box 17 Fairbury, Nebraska USA 68352

P 402.729.3315 F 402.729.5804

[endicott.com](http://endicott.com)

