

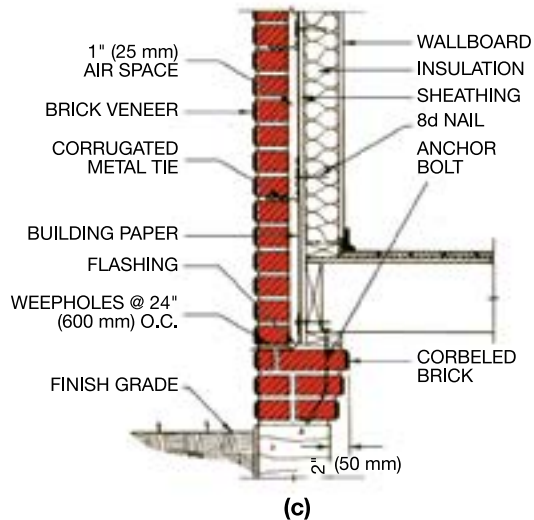
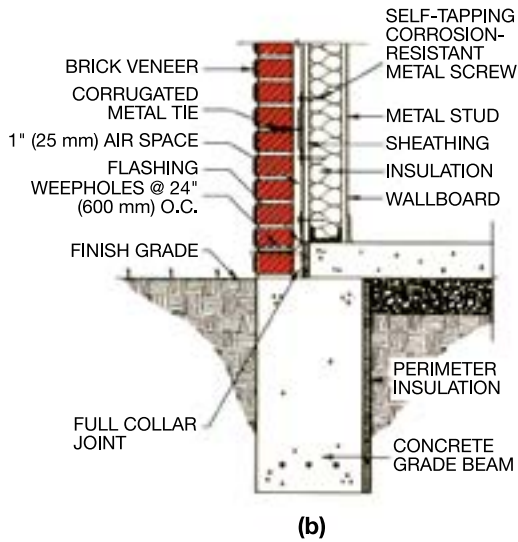
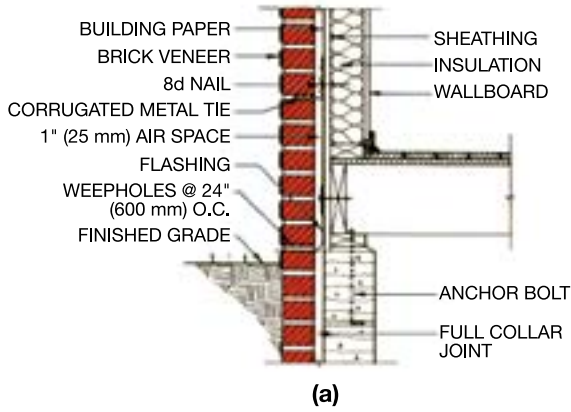
BRICK CONSTRUCTION DETAILS

endicott.com

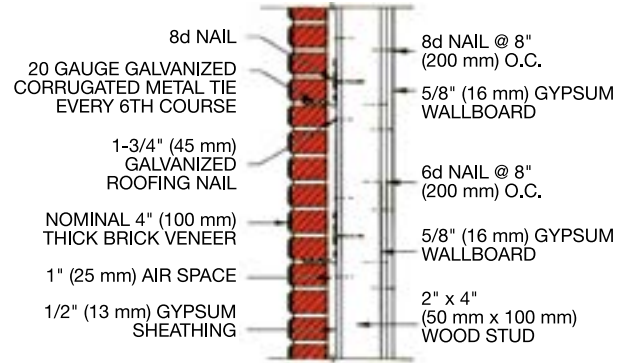


NEXT PAGE >

TYPICAL FOUNDATION DETAILS



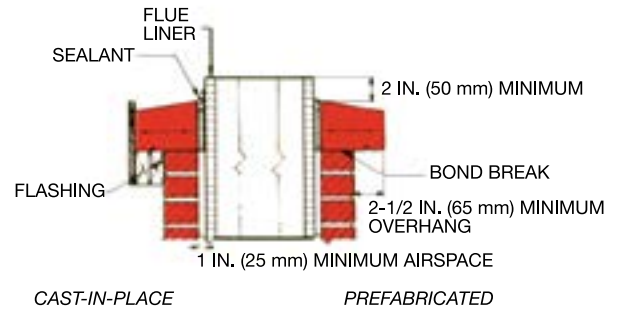
FIRE RESISTANCE



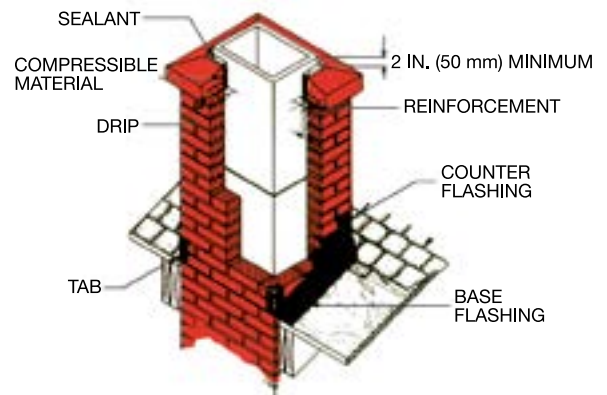
2-Hour Fire Rated Brick Veneer Wall Assembly

Typical brick veneer wall assemblies have fire ratings of up to 2 hours. The figure above shows a typical brick veneer wall assembly with a 2-hour fire rating.

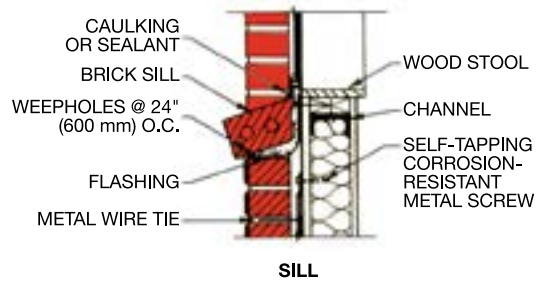
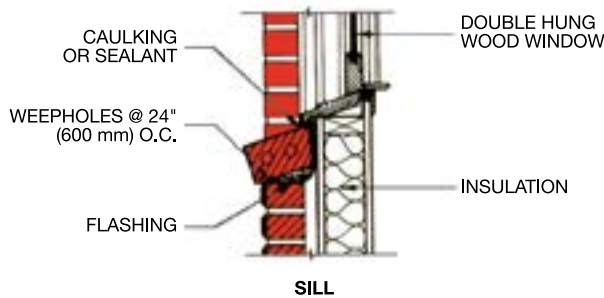
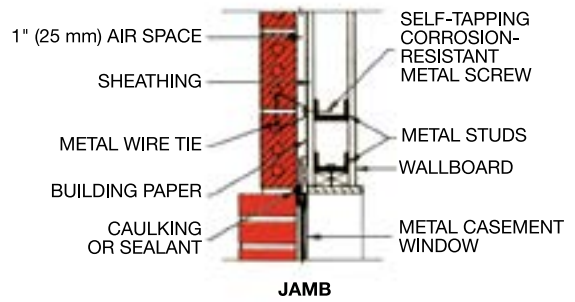
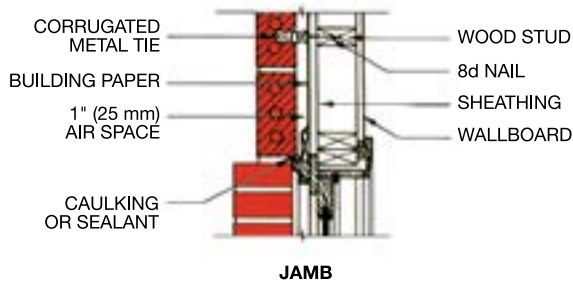
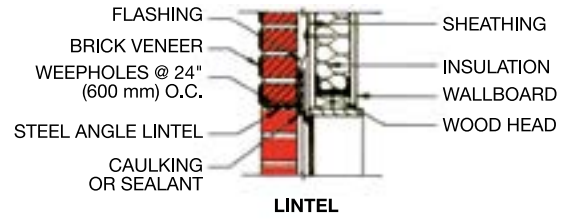
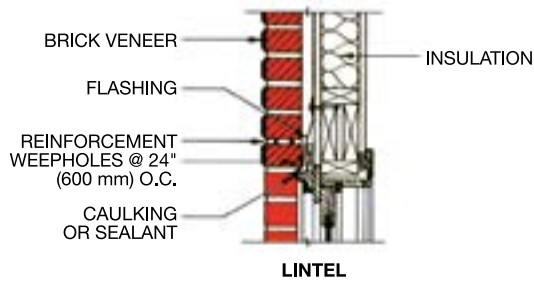
CHIMNEY CAP DETAIL



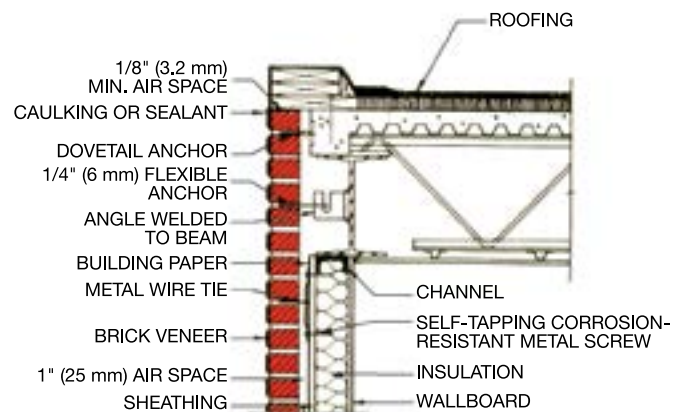
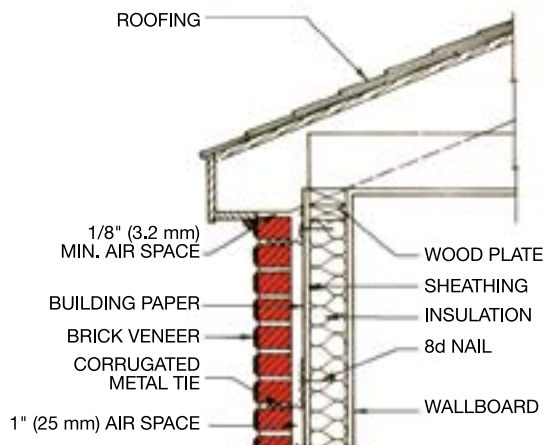
TYPICAL SECTION AND FLASHING DETAIL



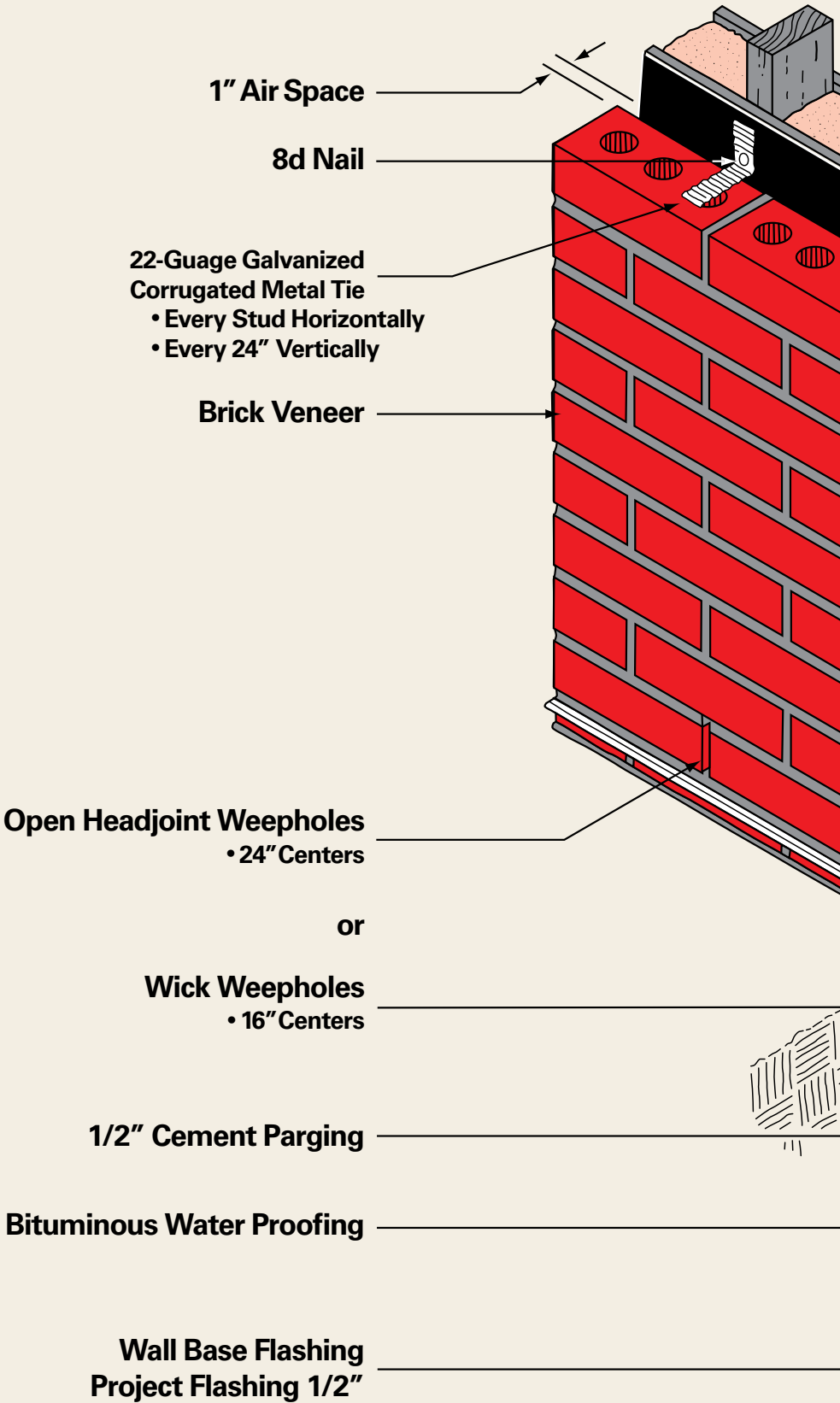
TYPICAL LINTEL, JAMB AND SILL DETAILS

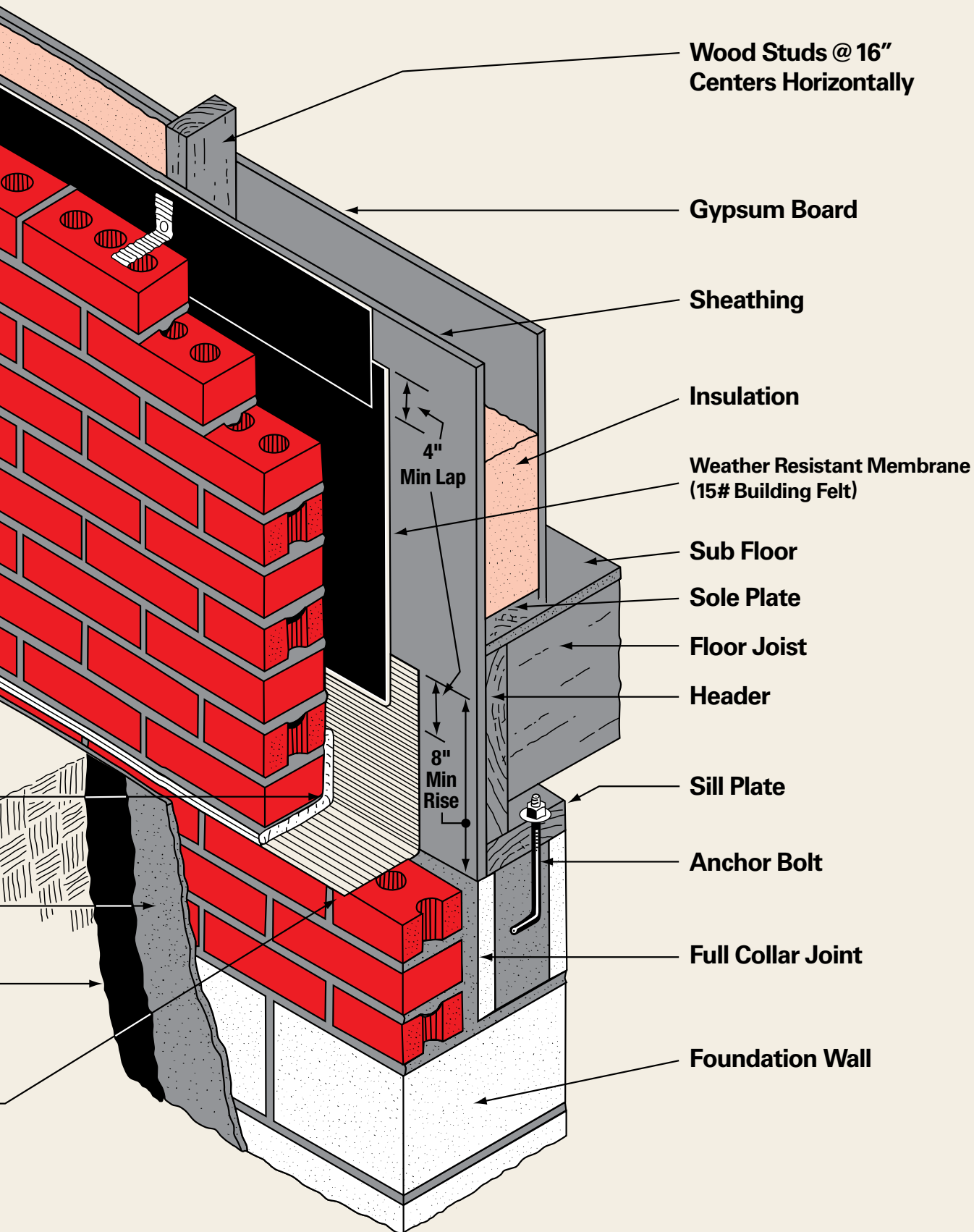


TYPICAL EAVE DETAILS



BRICK VENEER WALL





**Wood Studs @ 16"
Centers Horizontally**

Gypsum Board

Sheathing

Insulation

**Weather Resistant Membrane
(15# Building Felt)**

Sub Floor

Sole Plate

Floor Joist

Header

Sill Plate

Anchor Bolt

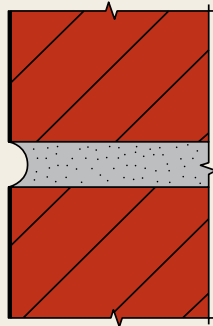
Full Collar Joint

Foundation Wall

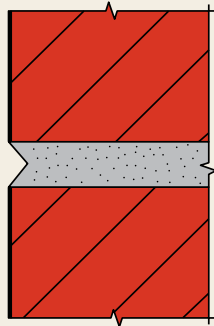
4"
Min Lap

8"
Min Rise

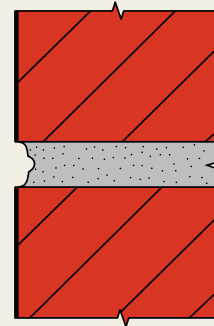
TYPICAL BRICK MASONRY MORTAR JOINTS



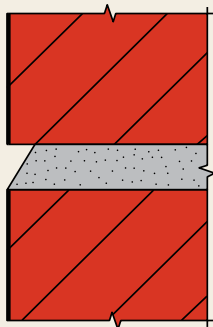
CONCAVE
Severe Weathering



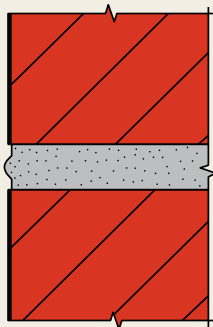
V
Severe Weathering



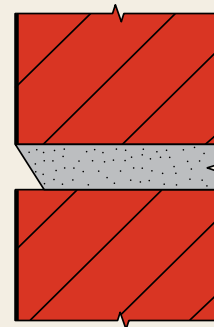
GRAPEVINE
Severe Weathering



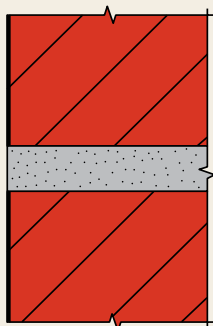
WEATHERED
Moderate Weathering



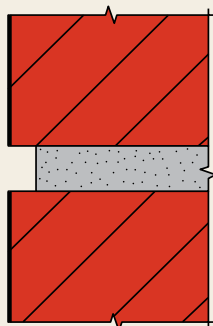
BEADED
Moderate Weathering



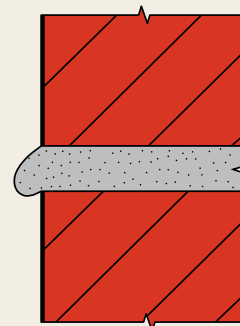
STRUCK*
Moderate Weathering



FLUSH*
Negligible Weathering



RAKED*
Negligible Weathering



EXTRUDED*
Negligible Weathering

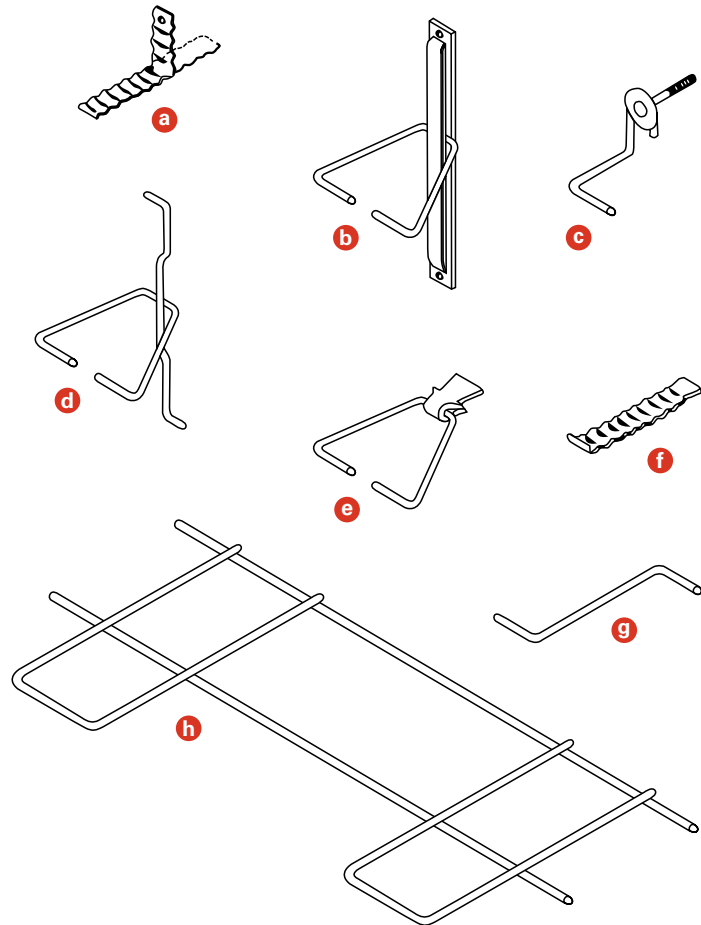
***Note:** Endicott Clay Products does not recommend Struck, Flush, Raked or Extruded mortar joints.

EMPIRICAL HEIGHT LIMITATIONS FOR BRICK VENEER

Nominal Thickness of the Brick Veneer, in (mm)	Stories	Height at Plate, ft (m)	Height at Gable, ft (m)
3 (75)	2	20 (6.10)	28 (8.53)
4 (100)	3	30 (9.14)	38 (11.58)

TYPICAL TIES FOR BRICK VENEER

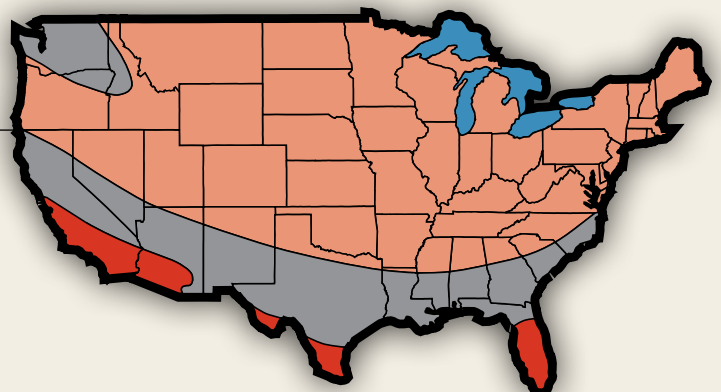
- a** Used to attach brick veneer to wood frame backup
- b** Used to attach brick veneer to metal studs
- c** Same as (b)
- d** Used to attach brick veneer to structural steel
- e** Used to attach brick veneer to concrete backup
- f** Same as (e)
- g** Used to attach brick veneer to masonry backup
- h** Same as (g)



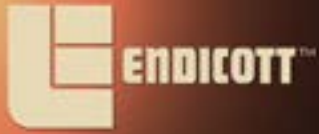
Endicott Recommended Weathering Indexes in the United States

WEATHERING REGIONS

- Severe Weathering
- Moderate Weathering
- Negligible Weathering



FOR FURTHER EXPLANATION REGARDING THE INFORMATION IN THIS BROCHURE, REFER TO BIA TECHNICAL NOTES ON BRICK CONSTRUCTION.



SINCE 1920



Endicott has been building one success story after another all across the U.S.

The unique clays found only in Jefferson County, Nebraska, make it possible for Endicott to produce a wide variety of face brick, pavers, tile, thin brick and special shapes that are nationally recognized for their quality and aesthetic beauty.

Endicott products are distributed throughout the United States. For literature, samples and the name of your nearest distributor, contact Endicott today.

Endicott Clay Products Co
P.O. Box 17
Fairbury, Nebraska USA 68352
402/729-3315 FAX: 402/729-5804

Endicott Tile LLC
P.O. Box 645
Fairbury, Nebraska USA 68352
402/729-3323 FAX: 402/729-5804

endicott@endicott.com
endicott.com



Try our new
Masonry Designer
and Virtual Mason
now at endicott.com